

These numbers provide a preliminary summary of Criminal Justice Reform data. Statistics continue to be reviewed, revised, and validated.

Chart A - Warrants
Initial Release Decisions for Criminal Justice Reform Eligible Defendants
January 1, 2021 - December 31, 2021

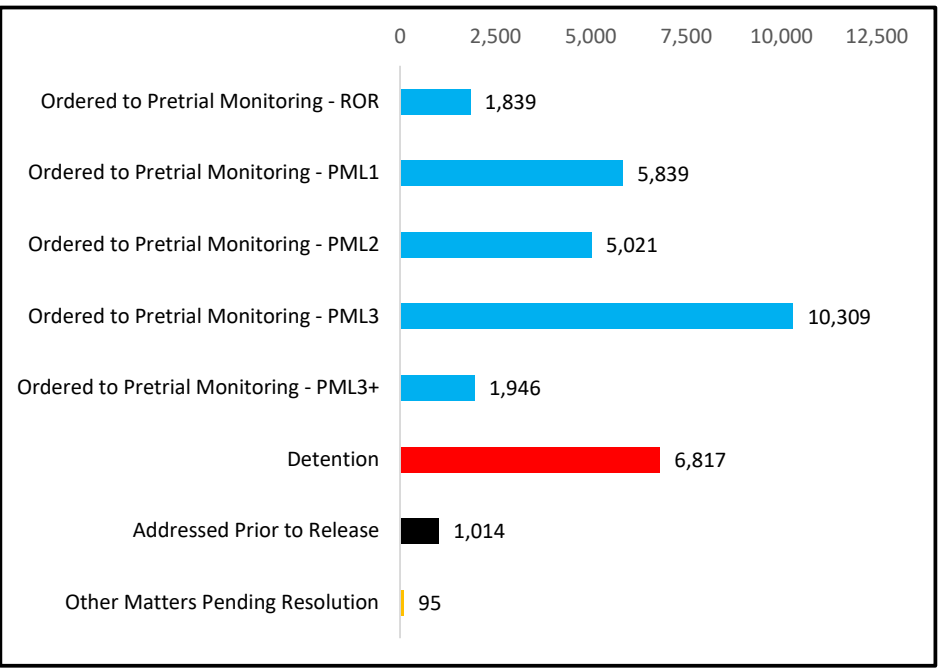
	Defendants	Addressed Prior to Initial Release Decision (i.e., Remand or Dismissal)		Defendants Ordered to Pretrial Monitoring System										Detention		Other Matters Pending Resolution					
				ROR		Monitoring Level										Detention		Detention Motions		Other Pending	
						PML1		PML2		PML3		PML3+						#	%	#	%
						#	%	#	%	#	%	#	%								
#	%	#	%	#	%	#	%	#	%	#	%	#	%	#	%						
Atlantic	898	13	1.4%	35	3.9%	76	8.5%	111	12.4%	154	17.1%	13	1.4%	492	54.8%	4	0.4%	0	0.0%		
Bergen	1,348	30	2.2%	136	10.1%	199	14.8%	215	15.9%	443	32.9%	73	5.4%	249	18.5%	2	0.1%	1	0.1%		
Burlington	1,234	30	2.4%	35	2.8%	193	15.6%	268	21.7%	334	27.1%	69	5.6%	302	24.5%	3	0.2%	0	0.0%		
Camden	3,549	103	2.9%	59	1.7%	211	5.9%	325	9.2%	1,915	54.0%	249	7.0%	678	19.1%	4	0.1%	5	0.1%		
Cape May	528	11	2.1%	8	1.5%	36	6.8%	49	9.3%	222	42.0%	2	0.4%	200	37.9%	0	0.0%	0	0.0%		
Cumberland	974	49	5.0%	36	3.7%	143	14.7%	126	12.9%	243	24.9%	6	0.6%	369	37.9%	2	0.2%	0	0.0%		
Essex	5,945	374	6.3%	82	1.4%	1482	24.9%	850	14.3%	1,843	31.0%	351	5.9%	956	16.1%	3	0.1%	4	0.1%		
Gloucester	860	17	2.0%	64	7.4%	154	17.9%	194	22.6%	262	30.5%	16	1.9%	152	17.7%	0	0.0%	1	0.1%		
Hudson	3,419	101	3.0%	393	11.5%	590	17.3%	526	15.4%	972	28.4%	235	6.9%	578	16.9%	13	0.4%	11	0.3%		
Hunterdon	116	1	0.9%	3	2.6%	24	20.7%	16	13.8%	47	40.5%	2	1.7%	21	18.1%	2	1.7%	0	0.0%		
Mercer	2,551	56	2.2%	433	17.0%	412	16.2%	280	11.0%	703	27.6%	341	13.4%	317	12.4%	8	0.3%	1	0.0%		
Middlesex	1,975	58	2.9%	191	9.7%	354	17.9%	245	12.4%	572	29.0%	205	10.4%	341	17.3%	9	0.5%	0	0.0%		
Monmouth	1,569	27	1.7%	47	3.0%	315	20.1%	252	16.1%	542	34.5%	60	3.8%	323	20.6%	3	0.2%	0	0.0%		
Morris	535	10	1.9%	24	4.5%	91	17.0%	76	14.2%	171	32.0%	6	1.1%	156	29.2%	1	0.2%	0	0.0%		
Ocean	1,568	11	0.7%	74	4.7%	196	12.5%	314	20.0%	581	37.1%	99	6.3%	291	18.6%	2	0.1%	0	0.0%		
Passaic	2,857	53	1.9%	49	1.7%	783	27.4%	743	26.0%	500	17.5%	67	2.3%	654	22.9%	8	0.3%	0	0.0%		
Salem	277	28	10.1%	22	7.9%	32	11.6%	25	9.0%	82	29.6%	3	1.1%	85	30.7%	0	0.0%	0	0.0%		
Somerset	625	11	1.8%	31	5.0%	115	18.4%	95	15.2%	207	33.1%	12	1.9%	153	24.5%	1	0.2%	0	0.0%		
Sussex	171	2	1.2%	1	0.6%	14	8.2%	39	22.8%	67	39.2%	1	0.6%	47	27.5%	0	0.0%	0	0.0%		
Union	1495	24	1.6%	113	7.6%	329	22.0%	223	14.9%	262	17.5%	135	9.0%	404	27.0%	5	0.3%	0	0.0%		
Warren	386	5	1.3%	3	0.8%	90	23.3%	49	12.7%	187	48.4%	1	0.3%	49	12.7%	2	0.5%	0	0.0%		
State	32,880	1,014	3.1%	1,839	5.6%	5,839	17.8%	5,021	15.3%	10,309	31.4%	1,946	5.9%	6,817	20.7%	72	0.2%	23	0.1%		

Note: This report is based on defendant which is defined as a Criminal Justice Reform eligible defendant with CDR2 warrants filed within three days of each other for the defendant.

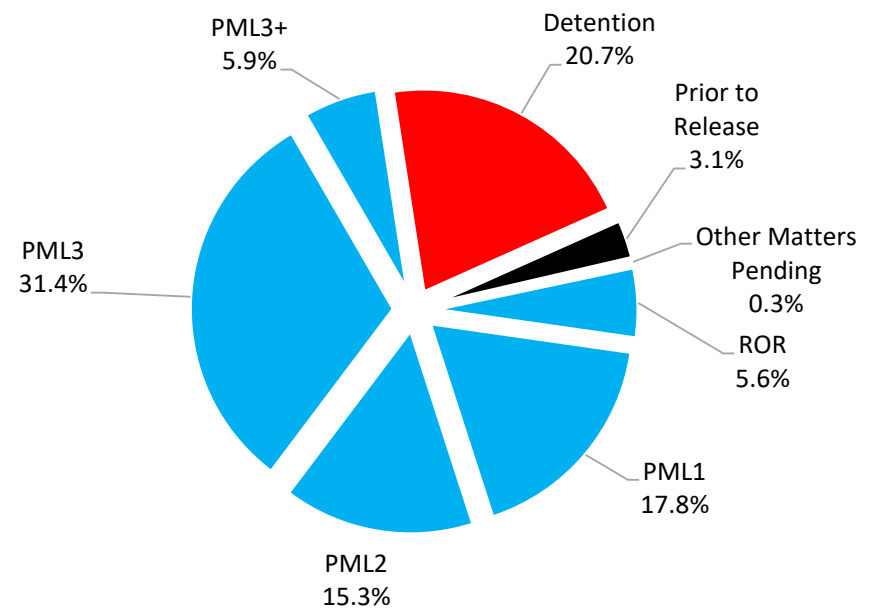
These numbers provide a preliminary summary of Criminal Justice Reform data. Statistics continue to be reviewed, revised, and validated.

Chart A - Supplemental Graphs
Initial Release Decisions for Criminal Justice Reform Eligible Defendants
January 1, 2021 - December 31, 2021

Initial Release Decisions by Type of Decision (number of defendants)



Initial Release Decisions by Type of Decision (percentage of defendants)



These numbers provide a preliminary summary of Criminal Justice Reform data. Statistics continue to be reviewed, revised, and validated.

Chart B
 Detention Motions for Criminal Justice Reform Eligible Defendants
 Granted, Denied, and Withdrawn
 January 1, 2021 - December 31, 2021

							Motions		Total of Decisions and
	Granted Motions for Defendants		Denied Motions for Defendants		Total Decisions for Defendants		Withdrawn or Dismissed for Defendants		Motions Withdrawn or Dismissed
	Number	Percent of Decisions	Number	Percent of Decisions	Number	Percent of Total	Number	Percent of Total	Number
Atlantic	492	64.5%	271	35.5%	763	96.8%	25	3.2%	788
Bergen	249	69.9%	107	30.1%	356	70.5%	149	29.5%	505
Burlington	302	46.7%	344	53.3%	646	84.9%	115	15.1%	761
Camden	678	62.8%	402	37.2%	1080	63.9%	609	36.1%	1,689
Cape May	200	57.1%	150	42.9%	350	81.2%	81	18.8%	431
Cumberland	369	47.8%	403	52.2%	772	95.4%	37	4.6%	809
Essex	956	51.4%	905	48.6%	1861	87.1%	275	12.9%	2,136
Gloucester	152	53.9%	130	46.1%	282	54.7%	234	45.3%	516
Hudson	578	41.3%	821	58.7%	1399	95.1%	72	4.9%	1,471
Hunterdon	21	72.4%	8	27.6%	29	44.6%	36	55.4%	65
Mercer	317	54.8%	261	45.2%	578	73.6%	207	26.4%	785
Middlesex	341	67.4%	165	32.6%	506	62.7%	301	37.3%	807
Monmouth	323	55.6%	258	44.4%	581	87.6%	82	12.4%	663
Morris	156	82.1%	34	17.9%	190	74.5%	65	25.5%	255
Ocean	291	31.6%	629	68.4%	920	93.5%	64	6.5%	984
Passaic	654	68.4%	302	31.6%	956	97.1%	29	2.9%	985
Salem	85	40.7%	124	59.3%	209	81.6%	47	18.4%	256
Somerset	153	40.8%	222	59.2%	375	95.9%	16	4.1%	391
Sussex	47	70.1%	20	29.9%	67	74.4%	23	25.6%	90
Union	404	50.4%	397	49.6%	801	90.9%	80	9.1%	881
Warren	49	46.7%	56	53.3%	105	61.4%	66	38.6%	171
State	6,817	53.1%	6,009	46.9%	12,826	83.1%	2,613	16.9%	15,439

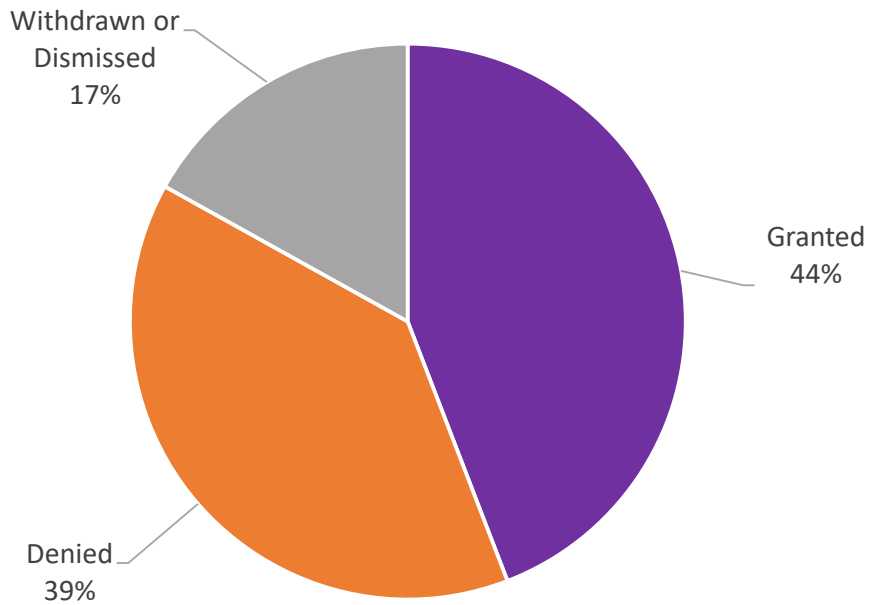
The number of granted motions shown on this chart represents all detention motions filed during the process. There may be multiple detention motions filed for a single defendant, i.e., a motion to revoke release or reopen a hearing on a defendant previously released.

Table includes complete motions that were granted, denied, withdrawn or dismissed.

These numbers provide a preliminary summary of Criminal Justice Reform data. Statistics continue to be reviewed, revised, and validated.

Chart B - Supplemental Graph
Detention Motions for Criminal Justice Reform Eligible Defendants
Defendants Arrested January 1, 2021 - December 31, 2021

Detention Motions Granted, Denied, Withdrawn or Dismissed



Detention Motions	
Granted	6,817
Denied	6,009
Withdrawn or Dismissed	2,613
Total	15,439

Chart C
Nonsentenced Pretrial Jail Population
December 31, 2021

	December 31, 2015 to December 31, 2021								January 1, 2017 to December 31, 2021				
	December 31, 2015	December 31, 2016	December 31, 2017	December 31, 2018	December 31, 2019	December 31, 2020	December 31, 2021	Percent Change		January 1, 2017	December 31, 2021	Number	Percent
								2015-2021	2020-2021				
Atlantic	384	348	325	292	283	369	398	3.6%	7.9%	348	398	50	14.4%
Bergen	476	341	226	224	281	285	297	-37.6%	4.2%	347	297	-50	-14.4%
Burlington	380	319	299	221	213	252	243	-36.1%	-3.6%	321	243	-78	-24.3%
Camden	838	628	438	396	399	568	619	-26.1%	9.0%	637	619	-18	-2.8%
Cape May	171	164	136	111	106	124	141	-17.5%	13.7%	166	141	-25	-15.1%
Cumberland	295	262	251	222	236	225	286	-3.1%	27.1%	266	286	20	7.5%
Essex	1,543	1,179	889	857	876	1,014	1,027	-33.4%	1.3%	1,192	1,027	-165	-13.8%
Gloucester	238	159	187	129	121	136	156	-34.5%	14.7%	164	156	-8	-4.9%
Hudson	744	541	463	348	415	608	691	-7.1%	13.7%	541	691	150	27.7%
Hunterdon	54	42	26	32	23	20	12	-77.8%	-40.0%	43	12	-31	-72.1%
Mercer	561	435	302	302	234	300	407	-27.5%	35.7%	433	407	-26	-6.0%
Middlesex	654	616	446	379	385	265	370	-43.4%	39.6%	617	370	-247	-40.0%
Monmouth	675	533	425	360	321	326	407	-39.7%	24.8%	542	407	-135	-24.9%
Morris	151	97	124	110	125	106	118	-21.9%	11.3%	98	118	20	20.4%
Ocean	308	262	205	170	195	171	173	-43.8%	1.2%	266	173	-93	-35.0%
Passaic	731	593	557	455	401	484	650	-11.1%	34.3%	592	650	58	9.8%
Salem	73	58	59	50	53	70	97	32.9%	38.6%	63	97	34	54.0%
Somerset	126	80	79	83	77	62	102	-19.0%	64.5%	81	102	21	25.9%
Sussex	90	48	68	39	41	27	31	-65.6%	14.8%	48	31	-17	-35.4%
Union	566	456	356	289	269	364	433	-23.5%	19.0%	516	433	-83	-16.1%
Warren	79	56	44	55	43	40	49	-38.0%	22.5%	56	49	-7	-12.5%
State Total	9,137	7,217	5,905	5,124	5,097	5,816	6,707	-26.6%	15.3%	7,337	6,707	-630	-8.6%
*Adjusted State Tot	8,899	7,058	5,718	4,995	4,976	5,680	6,551	-26.4%	15.3%	7,173	6,551	-622	-8.7%

* Note: The Gloucester County Jail was closed and the inmates were moved to the Salem County Jail on May 3, 2013. Depending on various factors, the inmates could then stay in the Salem County Jail or go to one of 4 counties: Cumberland, Camden, Essex or Burlington.

The Adjusted State Total removes Gloucester from the State Total after May 3, 2013 so that the inmates are not counted twice in the total.

The Hunterdon County Jail was closed and the inmates were moved to Somerset on September 8, 2015. This table removes the Hunterdon inmates from Somerset and only counts them in Hunterdon after September 8, 2015.

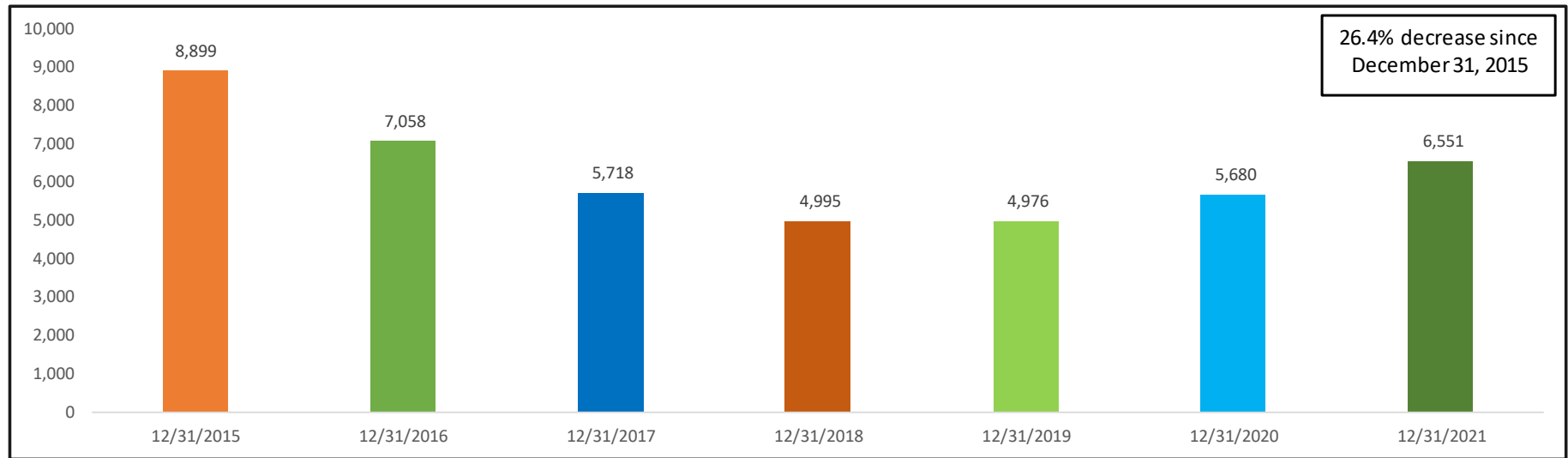
The Burlington County Jail female inmates were moved to Atlantic. This table does not show the Burlington females in Atlantic but shows them in Burlington.

In April and May 2017 nonsentenced pretrial jail population data was reviewed by the county jails and feedback was given.

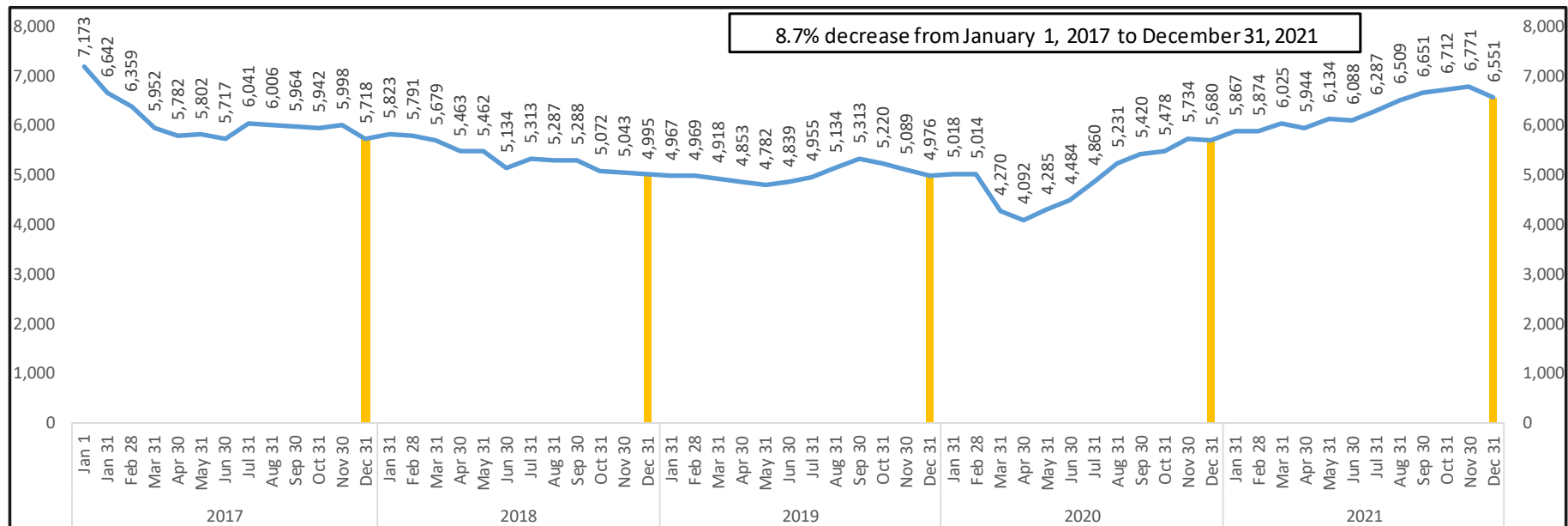
We will continue to use the nonsentenced pretrial jail population numbers in reports.

These numbers provide a preliminary summary of Criminal Justice Reform data. Statistics continue to be reviewed, revised, and validated.

Chart C - Supplemental Graphs
Nonsentenced Pretrial Jail Population
December 31, 2021
 December 31, 2015 and December 31, 2016 -2021



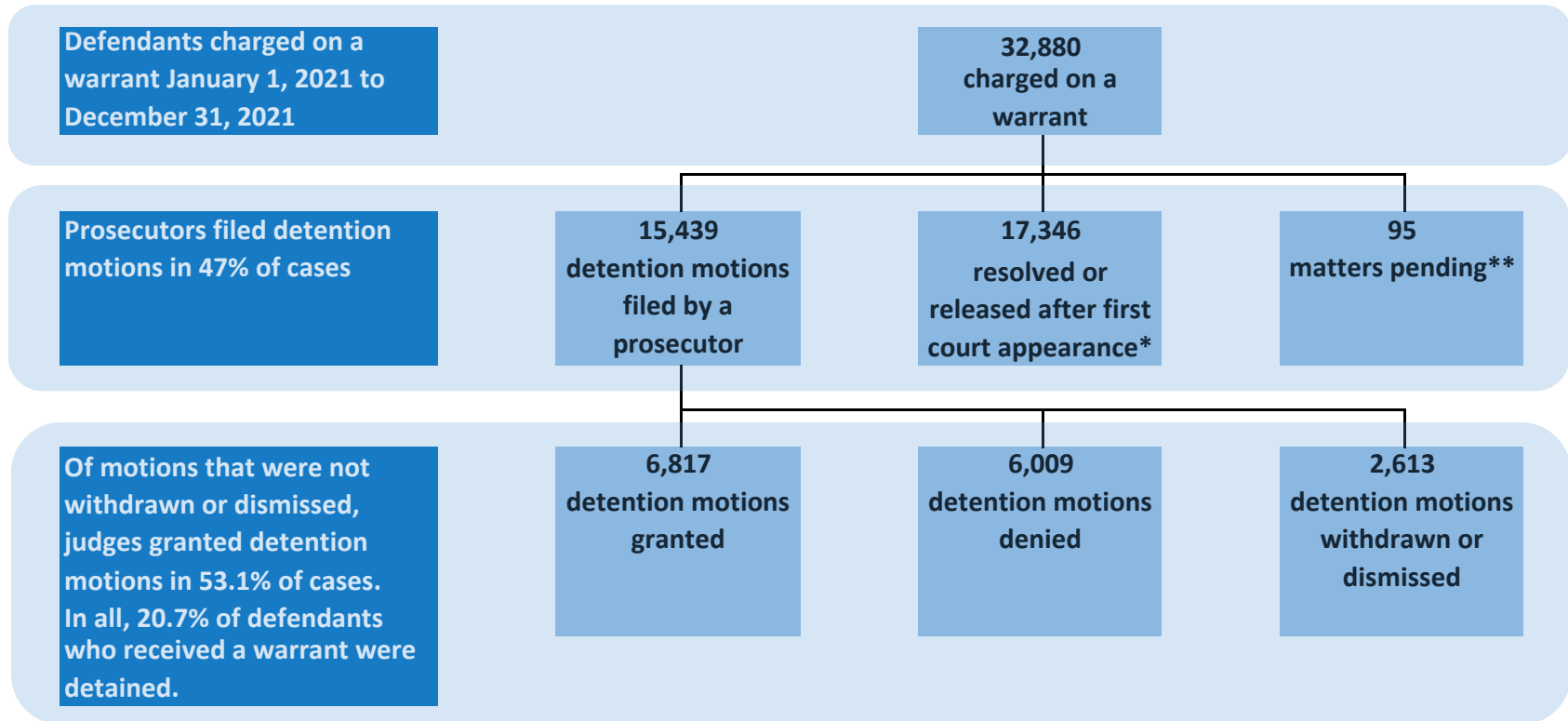
January 1, 2017 to December 31, 2021



Effective January 2021, this chart contains an additional year of data including date-in-time comparisons that go back six years.

These numbers provide a preliminary summary of Criminal Justice Reform data. Statistics continue to be reviewed, revised, and validated.

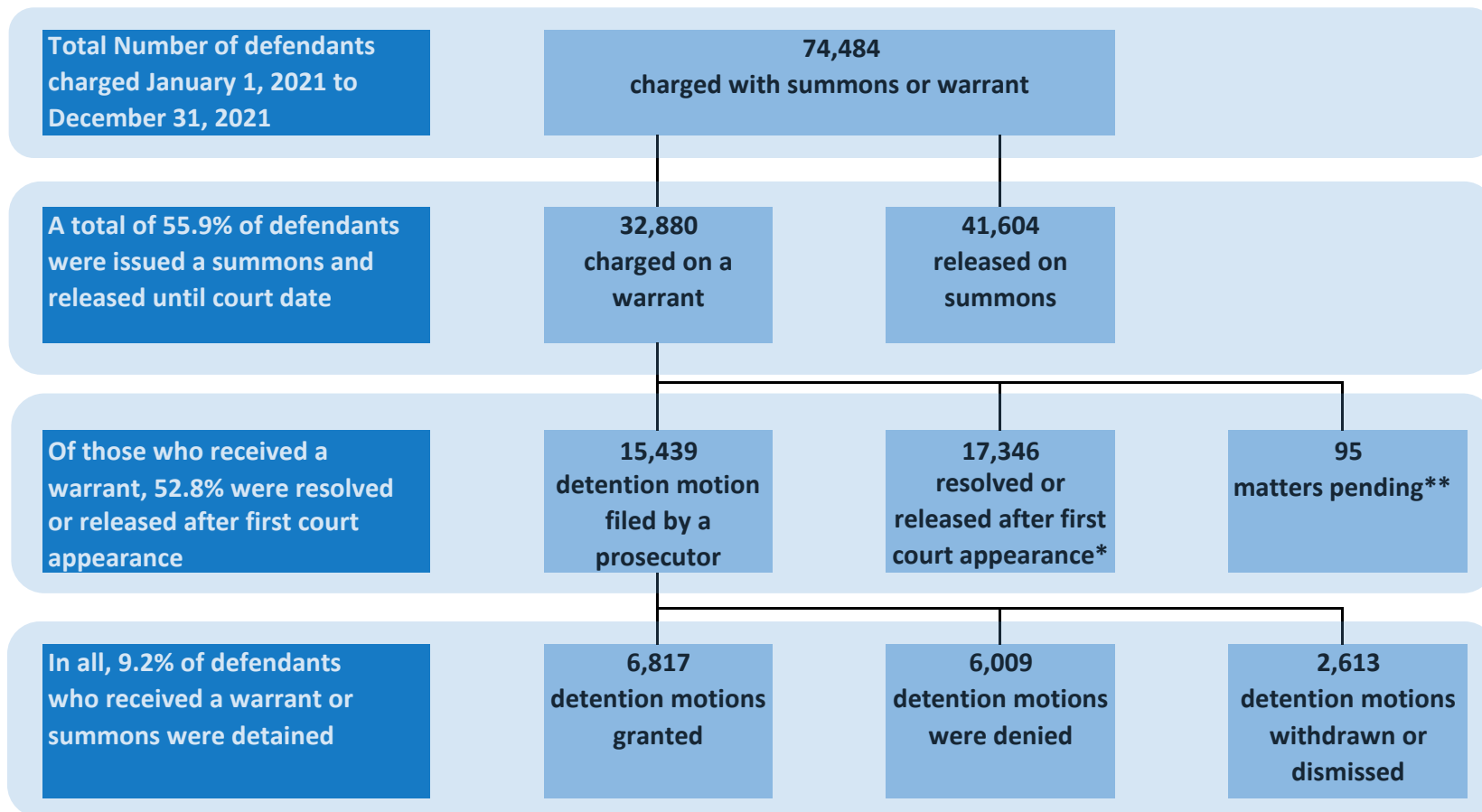
Chart D (Warrant) Pretrial Detention Decisions January 1, 2021 - December 31, 2021



Summary Statistics (Warrant Cases)	Detention 20.7%	Pretrial Release* 79.0%	Pending 0.3%
* this includes cases that were addressed prior to release decisions (1,014)			
** as of January 14th, 2022			

These numbers provide a preliminary summary of Criminal Justice Reform data. Statistics continue to be reviewed, revised, and validated.

Chart D (Summons or Warrant) Pretrial Detention Decisions January 1, 2021 - December 31, 2021



Summary Statistics (Warrant and Summons Cases)	Detention 9.2%	Pretrial Release* 90.7%	Pending 0.1%
* this includes cases that were addressed prior to release decisions (1,014)			
** as of January 14th, 2022			

These numbers provide a preliminary summary of Criminal Justice Reform data. Statistics continue to be reviewed, revised, and validated.

Chart E

**Comparison of Initial Release Decisions for Criminal Justice Reform Eligible Defendants and Detention Motions Granted, Denied, Withdrawn or Dismissed
January 1 - December 31, 2020 and January 1 - December 31, 2021**

	Defendants		Addressed Prior to Release Decision		ROR		PML1		PML2		PML3		PML3+		Detention	
	Jan-20 to Dec-20	Jan-21 to Dec-21	Jan-20 to Dec-20	Jan-21 to Dec-21	Jan-20 to Dec-20	Jan-21 to Dec-21	Jan-20 to Dec-20	Jan-21 to Dec-21	Jan-20 to Dec-20	Jan-21 to Dec-21	Jan-20 to Dec-20	Jan-21 to Dec-21	Jan-20 to Dec-20	Jan-21 to Dec-21	Jan-20 to Dec-20	Jan-21 to Dec-21
	Atlantic	819	898	8	13	19	35	90	76	114	111	135	154	13	13	440
Bergen	1,222	1,348	37	30	148	136	194	199	199	215	340	443	84	73	220	249
Burlington	1,211	1,234	32	30	48	35	129	193	174	268	325	334	59	69	444	302
Camden	3,042	3,549	105	103	58	59	228	211	340	325	1,490	1,915	207	249	614	678
Cape May	438	528	9	11	12	8	35	36	49	49	144	222	6	2	183	200
Cumberland	883	974	21	49	43	36	118	143	154	126	166	243	2	6	379	369
Essex	5,903	5,945	151	374	110	82	1,265	1,482	1,263	850	1,511	1,843	533	351	1,070	956
Gloucester	841	860	17	17	30	64	123	154	157	194	292	262	4	16	218	152
Hudson	3,164	3,419	161	101	328	393	447	590	368	526	1,035	972	231	235	594	578
Hunterdon	136	116	6	1	5	3	27	24	16	16	50	47	1	2	31	21
Mercer	2,344	2,551	65	56	353	433	410	412	277	280	577	703	323	341	339	317
Middlesex	1,680	1,975	57	58	178	191	323	354	211	245	486	572	166	205	259	341
Monmouth	1,572	1,569	20	27	32	47	271	315	217	252	396	542	296	60	340	323
Morris	597	535	15	10	29	24	114	91	92	76	138	171	22	6	187	156
Ocean	1,612	1,568	15	11	81	74	216	196	319	314	439	581	135	99	407	291
Passaic	2,706	2,857	66	53	99	49	760	783	718	743	358	500	76	67	629	654
Salem	254	277	26	28	14	22	26	32	25	25	63	82	0	3	100	85
Somerset	559	625	6	11	39	31	102	115	88	95	169	207	20	12	135	153
Sussex	168	171	3	2	5	1	22	14	30	39	50	67	2	1	56	47
Union	1,292	1,495	20	24	101	113	219	329	149	223	222	262	142	135	439	404
Warren	247	386	8	5	11	3	46	90	33	49	95	187	0	1	54	49
State	30,690	32,880	848	1,014	1,743	1,839	5,165	5,839	4,993	5,021	8,481	10,309	2,322	1,946	7,138	6,817

Note: This report is based on defendant which is defined as a Criminal Justice Reform eligible defendant with CDR2 warrants filed within three days of each other for the defendant.

	Detention Motions Granted				Detention Motions Denied				Detention Motions Withdrawn/Dismissed				Total	
	Number		% of Decisions		Number		% of Decisions		Number		% of Motions		Detention Motions	
	Jan-20 to Dec-20	Jan-21 to Dec-21	Jan-20 to Dec-20	Jan-21 to Dec-21	Jan-20 to Dec-20	Jan-21 to Dec-21	Jan-20 to Dec-20	Jan-21 to Dec-21	Jan-20 to Dec-20	Jan-21 to Dec-21	Jan-20 to Dec-20	Jan-21 to Dec-21	Jan-20 to Dec-20	Jan-21 to Dec-21
Atlantic	440	492	55.9%	64.5%	347	271	44.1%	35.5%	29	25	3.6%	3.2%	816	788
Bergen	220	249	61.3%	69.9%	139	107	38.7%	30.1%	104	149	22.5%	29.5%	463	505
Burlington	444	302	70.5%	46.7%	186	344	29.5%	53.3%	168	115	21.1%	15.1%	798	761
Camden	614	678	63.3%	62.8%	356	402	36.7%	37.2%	551	609	36.2%	36.1%	1,521	1,689
Cape May	183	200	56.7%	57.1%	140	150	43.3%	42.9%	61	81	15.9%	18.8%	384	431
Cumberland	379	369	52.1%	47.8%	348	403	47.9%	52.2%	56	37	7.2%	4.6%	783	809
Essex	1,070	956	49.2%	51.4%	1,104	905	50.8%	48.6%	334	275	13.3%	12.9%	2,508	2,136
Gloucester	218	152	47.2%	53.9%	244	130	52.8%	46.1%	244	234	34.6%	45.3%	706	516
Hudson	594	578	47.6%	41.3%	654	821	52.4%	58.7%	79	72	6.0%	4.9%	1,327	1,471
Hunterdon	31	21	75.6%	72.4%	10	8	24.4%	27.6%	36	36	46.8%	55.4%	77	65
Mercer	339	317	53.1%	54.8%	300	261	46.9%	45.2%	206	207	24.4%	26.4%	845	785
Middlesex	259	341	65.6%	67.4%	136	165	34.4%	32.6%	220	301	35.8%	37.3%	615	807
Monmouth	340	323	51.7%	55.6%	318	258	48.3%	44.4%	99	82	13.1%	12.4%	757	663
Morris	187	156	80.3%	82.1%	46	34	19.7%	17.9%	73	65	23.9%	25.5%	306	255
Ocean	407	291	38.1%	31.6%	662	629	61.9%	68.4%	42	64	3.8%	6.5%	1,111	984
Passaic	629	654	66.6%	68.4%	315	302	33.4%	31.6%	60	29	6.0%	2.9%	1,004	985
Salem	100	85	45.9%	40.7%	118	124	54.1%	59.3%	35	47	13.8%	18.4%	253	256
Somerset	135	153	38.4%	40.8%	217	222	61.6%	59.2%	14	16	3.8%	4.1%	366	391
Sussex	56	47	72.7%	70.1%	21	20	27.3%	29.9%	16	23	17.2%	25.6%	93	90
Union	439	404	59.4%	50.4%	300	397	40.6%	49.6%	76	80	9.3%	9.1%	815	881
Warren	54	49	58.1%	46.7%	39	56	41.9%	53.3%	44	66	32.1%	38.6%	137	171
State	7,138	6,817	54.3%	53.1%	6,000	6,009	45.7%	46.9%	2,547	2,613	16.2%	16.9%	15,685	15,439

The number of granted motions shown on this chart represents all detention motions filed during the process. There June be multiple detention motions filed for a single defendant, i.e., a motion to revoke release or reopen a hearing on a defendant previously released. Table includes complete motions that were granted, denied, withdrawn or dismissed.